

B-series B HW-series

**BRAVILOR
BONAMAT**



B-series



B HW-series

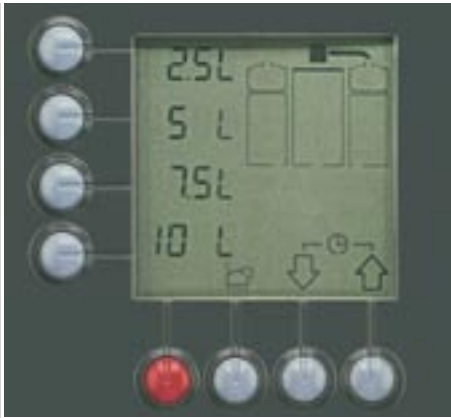


Round filter

The taste of quality worldwide



Do you require large quantities of delicious fresh filter coffee, brewed quickly? Then Bravilor Bonamat's round filter machine is the solution. The range is ideal for busy periods where high volumes of coffee are demanded, such as theatre intervals or hospital canteens. The containers can be placed in almost any location with ease allowing coffee to be served at any moment wherever you wish. The machines come equipped with user friendly programming and in an attractive design: the robust stainless steel appearance confirming the quality of this equipment.



The convenient control panel with LCD display makes it easy to adjust and read settings.

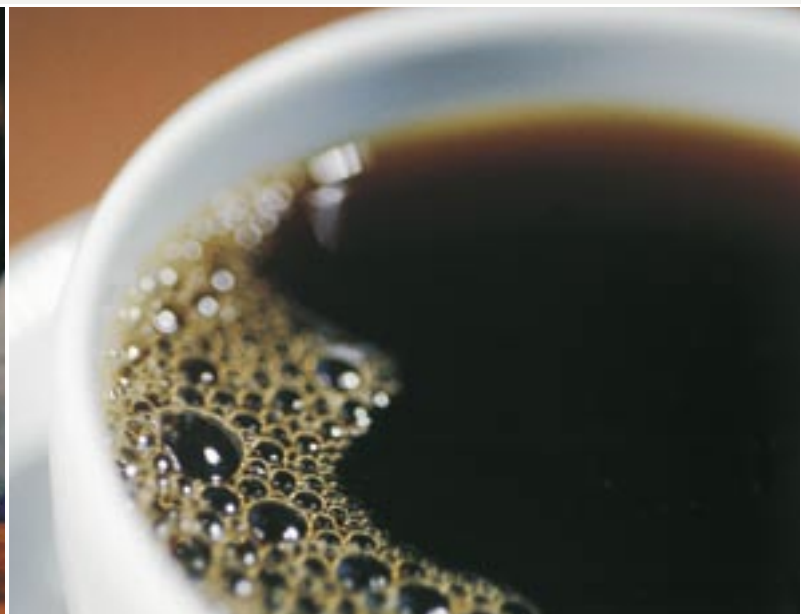


Round filtering machines highlighted

- Delicious fresh filter coffee
- Ideal for sites requiring large quantities of coffee brewed quickly
- Stainless steel filter pan and housing for a robust and quality appearance
- Individual containers that are easily transported for coffee to be served locally
- "Coffee-is-ready" signal
- Variety of serving sizes: by the cup, decanter, litres or gallon
- Total and daily counters
- Descaling system
- Built-in timer so coffee can be brewed whilst you are absent from the machinery
- Adjustable brewing time for optimum extraction
- Optimum safety mechanisms: container and swivel arm signal
- A variety of models available to suit every situation

A wide range of stackable containers. Each has a double wall, gauge glass and non-drip tap. Also available with double tap, as an insulated model and as tea container.





Models B-series & B HW-series

The B-series consists of four models with capacities of 5, 10, 20 and 40 litres. The B HW-series comprises three models: 5, 10 and 20 litres. Each model can make as much coffee as you like within its own capacity. The B HW-series features a separate tap for hot water. In addition, both series can be wall-mounted and are also available as a single model with one container and one brewing column. Therefore models can be built to meet your own requirements. Upon request models specifically for marine use are available.

Models containers

Type	Contents	Description
VG	5, 10, 20 and 40 litres	Completely insulated
VHG	5, 10, 20 and 40 litres	Electrical heating
VHG T	5, 10, 20 and 40 litres	Electrical heating and thermostatically controlled Especially for tea
VHG D	5, 10, 20 and 40 litres	Electrical heating and extra non-drip tap

Container	Dimensions (h x ø)
5 litres	445x210 mm
10 litres	464x286 mm
20 litres	510x374 mm
40 litres	629x423 mm

Accessories

- A wide range of containers
- Trolley
- Pedestal for raising tap level making it simple to fill higher capacity containers
- Frame work to place the machine anywhere
- Quick tapping tube
- Swivel outlet
- Filter basket
- Micro filter: no coffee filters necessary
- Wall brackets: for wall-mounting
- Tip up plate: for placing separate containers on the wall
- Tea filter and setting-up device

B-series B HW-series



The round filter machine is also available as a single model with one container and one brewing column. Additionally it is possible to construct machines for a greater capacity, for example a double or triple capacity model.



Standard model (2 containers)

Technical details	B5 (HW) (W)	B10 (HW) (W)	B20 (HW) (W)	B40 (W)
Coffee-making section				
Holding capacity	10 litres	20 litres	40 litres	80 litres
Throughput per hour	approx. 30 litres	approx. 60 litres	approx. 90 litres	approx. 145 litres
Brewing time (water flow)	approx. 10 min. / 5 litres	approx. 10 min. / 10 litres	approx. 14 min. / 20 litres	approx. 17 min. / 40 litres
Hot water section (HW)				
Holding capacity	3 litres	3,3 litres	4,6 litres	-
Throughput per hour	approx. 20 litres	approx. 20 litres	approx. 20 litres	-
Rated power B-series 230V ~ 50/60Hz	3130W	-	-	-
400V ~ 3N 50/60Hz	3130W	6180W	9240W	15120W
Rated power B HW-series 400V ~ 3N 50/60Hz	5330W	8380W	11440W	-
Dimensions B-series	635x440x799 mm	955x512x840 mm	1173x600x947 mm	1305x652x1101 mm
Dimensions B HW-series	790x570x799 mm	989x570x840 mm	1173x600x947 mm	-
Dimensions B-series W	980x559x740 mm	1125x593x781 mm	1257x586x888 mm	1295x586x1042 mm
Dimensions B HW-series W	980x559x740 mm	1155x593x781 mm	1257x592x888 mm	-

Dimensions wxdxh

The Bravor Bonamat filter basket is ideal for use with filter cups, making an excellent alternative to filter paper.





The machine is easy to fix to the wall.
The coffee can be made at a central location and poured anywhere in the building. Serving trolleys transport the containers effortlessly.



Single model (1 container)

Technical details	B5 (HW) (W) L/R	B10 (HW) (W) L/R	B20 (HW) (W) L/R	B40 (W) L/R
Coffee-making section				
Holding capacity	5 litres	10 litres	20 litres	40 litres
Throughput per hour	approx. 30 litres	approx. 60 litres	approx. 90 litres	approx. 145 litres
Brewing time (water flow)	approx. 10 min. / 5 litres	approx. 10 min. / 10 litres	approx. 14 min. / 20 litres	approx. 17 min. / 40 litres
Hot water section (HW)				
Holding capacity	3 litres	3,3 litres	4,6 litres	-
Throughput per hour	approx. 20 litres	approx. 20 litres	approx. 20 litres	-
Rated power B-series				
230V ~ 50/60Hz	3065W	-	-	-
400V ~ 3N 50/60Hz	3065W	6090W	9120W	14960W
Rated power B HW-series				
400V ~ 3N 50/60Hz	5265W	8290W	11320W	-
Dimensions B-serie	452x440x799 mm	612x512x840 mm	739x600x947 mm	803x652x1101 mm
Dimensions B HW-serie	546x570x799 mm	645x570x840 mm	739x600x947 mm	-
Dimensions B-series W	590x559x740 mm	663x593x781 mm	763x586x888 mm	763x586x1042 mm
Dimensions B HW-series W	590x559x740 mm	693x593x781 mm	744x592x888 mm	-

Dimensions wxdxh
L = left R = right

We advice the use of:

- Bravilor Bonamat filter papers for delicious coffee
- Renegite for descaling
- Cleaner for thorough cleaning

**/// BRAVILOR
BONAMAT**



Your Bravilor Bonamat dealer

Jurang Wholesale Limited
Premier House
Manchester Road
Mossley
OL5 9AA

www.jurang.co.uk - 01457 833672 - info@jurang.co.uk

Alterations reserved
904.600.004

www.bravilor.com

The taste of quality worldwide